

# Sublime Line®

Silicone gel filled breast implants  
in a modular design and four shell surfaces

Microthane® | POLYtxt® | MESMO® sensitive | POLYsmooth™

Même®



Replicon®























Opticon®



Optimam®



# The POLYTECH *SublimeLine*<sup>®</sup>

Shell surface Microthane <sup>®</sup> (30) POLYtxt <sup>®</sup> (20) MESMO <sup>®</sup> sensitive (15) POLYsmooth <sup>™</sup> (10)	Base type	Projection			
		low L	moderate M	high H	extra high X
<b>Même<sup>®</sup></b> round base, regular profile		 30 / 20 / 10 724	 30 / 20 / 15 / 10 725	 30 / 20 / 15 / 10 726	 30 / 20 / 15 / 10 727
<b>Replicon<sup>®</sup></b> round base, anatomical profile		 30 / 20 734	 30 / 20 / 15 735	 30 / 20 / 15 736	 30 / 20 737
<b>Opticon<sup>®</sup></b> short base, anatomical profile		 30 / 20 744	 30 / 20 745	 30 / 20 746	 30 / 20 747
<b>Optimam<sup>®</sup></b> oblong base, anatomical profile		 30 / 20 774	 30 / 20 775	 30 / 20 776	 30 / 20 777

## Fast and simple

The POLYTECH *SublimeLine*<sup>®</sup> series:  
a complete modular matrix of breast implants that is logical, easy to understand and simple to handle

The *SublimeLine*<sup>®</sup> from POLYTECH is a product line designed for a strategic approach to choose the right implant shape and size. Implant selection is based on four different styles, which have been named:

- **Même<sup>®</sup>** – round base, regular profile
- **Replicon<sup>®</sup>** – round base, anatomical profile
- **Opticon<sup>®</sup>** – short base, anatomical profile
- **Optimam<sup>®</sup>** – oblong base, anatomical profile

Applying the modular *SublimeLine*<sup>®</sup> matrix will ensure the desired results are achieved. 3 simple steps will lead to the selection of the optimum implant:

1. Measuring and determining the implant base size,
2. deciding for the implant style that best suits the patient's phenotype<sup>1</sup>, and
3. determining the desired projection.

As all implant styles are available with identical base diameters, the choice of any of the four different breast implant types can be matched with any of the four given projections.

**4 styles x 4 projections x 18 sizes =  
288 different breast implant variations**

The use of the POLYTECH *SublimeLine*<sup>®</sup> matrix – whether for breast augmentation or reconstruction – ensures that the optimum implant is available for every patient. With the systematic approach of the modular matrix, implant selection for surgical procedures is simplified, e.g. for the correction of asymmetries or the reconstruction without surgical adjustment of the contralateral breast.

Literature:

1) Del Yerro, J.L.M. (2011): Anatomic Cohesive Gel Implants: Reshaping the Breast in Different Body Types. Innovations in Plastic Surgery, Vol. 1, No. 3, 2007

## 3 simple steps to select the optimum implant

1	<p><b>Measure the breast base &amp; determine the base width.</b></p> <p>Alle Implantattypen sind mit einer Basisbreite zwischen 76 und 161 mm (Microthane®) bzw. 73 und 158 mm (POLYtxt®) in 5-mm-Schritten verfügbar.</p>
2	<p><b>Decide for one of the four implant types.</b></p> <p>Même®: round base, regular profile          Replicon®: round base, anatomical profile          Opticon®: short base, anatomical profile          Optimam®: oblong base, anatomical profile</p>
3	<p><b>Determine the projection.</b></p> <p>Every implant type is available in four projections.</p> <p>LP: Low Projection          MP: Moderate Projection          HP: High Projection          XP: Extra-High Projection</p>

## Quality means safety

All breast implants of the *SublimeLine*® carry the CE-mark for medical devices class III and fulfill the highest quality standards that are required for medical products.

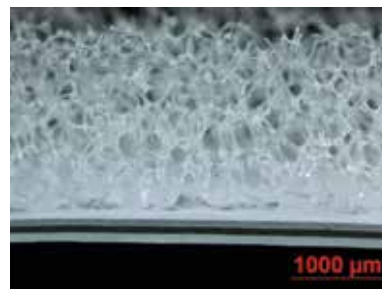
Production of the implants is based on a quality management according to ISO 9001 and ISO 13485. All materials used are of implantable medical quality.

### Highest material standards, best manufacturing

The chemically and mechanically resistant, elastic shell of the implants consists of several layers of a silicone elastomer. In order to maintain a high level of safety, the shell of the silicone gel-filled implants is equipped with an additional diffusion barrier layer.

Silicone shell elongation tests demonstrate an average elongation of 950% to rupture. This twice exceeds the industry standard that requires only 450% elongation.

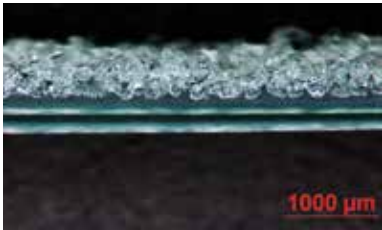
In this brochure you will find POLYTECH breast implants with the shell surfaces POLYsmooth™,



MESMO® sensitive, POLYtxt®, and Microthane®. **Microthane®** is an implant shell cover of medical-grade micropolyurethane foam. This type of

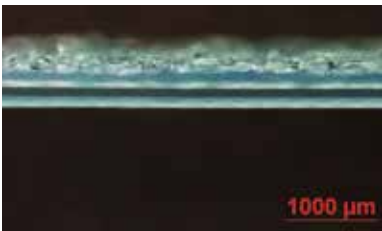
shell cover has a mean surface roughness of  $1500\mu\text{m}$ . Due to the ingrowth of capsular tissue into the Microthane® surface numerous small capsules are created. These microcapsules significantly reduce the risk for capsular contracture. An extensive long-term study shows that after 8 years the capsular

contracture rate with Microthane® implants compared to textured implants is 15% lower; it is even 30% lower compared to smooth implants<sup>1</sup>. (More information on the advantages of Microthane® covered breast implants can be found on page 5). In Europe, POLYTECH is the only manufacturer of implants with this type of surface.



**POLYtxt®**, the POLYTECH standard shell texture, has a rough open cell structure, on

average of 200–300µm in height and 100–400µm in diameter to allow tissue adherence. This surface is known for its reliability and has been proven to contribute to a reduction of capsular contracture rates. For the textured surface, the rates are 8 to 15%, which is around 15% lower than with smooth implants<sup>2</sup>.



The **MESMO® sensitive** micro-texture has a less rough open cell structure than the POLYtxt® standard

texture. Implants with this type of surface are easier to insert through smaller incisions.

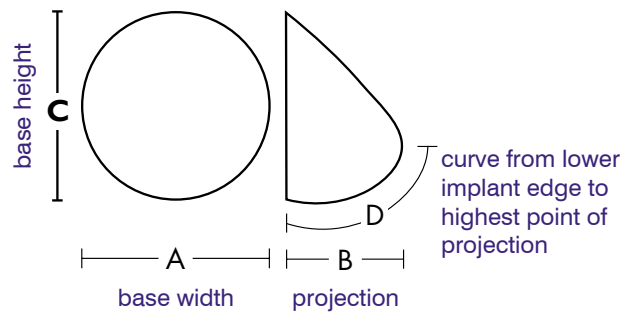


Breast implants with a smooth **POLYsmooth™** surface are suitable for example for

insertions through axillary incisions.

### Measurement D

The POLYTECH *SublimeLine®* implants feature the additional measurement D. This describes the distance between the highest point of projection of the implant and the lower implant edge. It creates a correlation between the optimum positioning of the areola and the inframammary fold. Using this measurement with anatomical implants will help to optimize the results.



The POLYTECH *SublimeLine®* implants are filled with EasyFit Gel™, a highly cross-linked and formstable silicone gel. The cohesive nature of the silicone gel allows the manufacturing of implants with different shapes and projections. The approach necessary for the implantation has to correspond to the implant size. After moderate compression the implant returns to its original shape due to the “memory effect” of the gel.

For the intra-operative determination of the optimum implant size there are sizers available in all variations marked with (\*) in the tables on the following pages. They match the respective implant style. The smooth, silicone gel-filled sizers are provided non-sterile and are certified for resterilisation and reuse of the device. Particularly in breast reconstruction surgery this intra-operative tool has proved useful.

### Indications for use

- Augmentation of the breast
- Reconstruction of the breast
- Correction of asymmetry
- Aplasia or hypoplasia
- Combined breast and thoracic deformities
- Ptosis or atrophy
- Implant replacement

### Important information

Please note the detailed instructions for use included with each product.

Literatur:

2) Handel, Neal (2006): Long-Term Safety and Efficacy of Polyurethane Foam-Covered Breast Implants. *Aesthet Surg J*; 26: 265-274  
 3) Iwuagwu, F. C., Frame, J. D. (1997): Silicone breast implants: complications. *British Journal of Plastic Surgery* (1997), 50, 632-636

## The POLYTECH micropolyurethane-foam implant cover

One of the principle considerations for any elective operations, e.g. breast reconstruction or augmentation is to minimize the number of complications. The most common complication of breast-implant surgery is capsular contracture.

Implants covered with Microthane® (micropolyurethane foam) have been developed to minimize the capsular contracture rate. In extensive clinical studies over the past twenty years reviewing large numbers of patients, the capsular contracture rates (Baker classification III and IV) have been determined. The capsular contracture rate for Microthane®-covered implants in virgin tissue is 0 to 9% compared to 9 to 50% for other implants. In most of the large studies, the capsular contracture rate for Microthane®-covered implants is as low as 0 to 3%<sup>1)</sup>. An extensive long-term study carried out in the United States using the Kaplan-Meier survival analysis confirms the significant reduction of the risk for capsular contracture with Microthane®-covered implants for up to 10 years after implantation. The statistics show that after 8 years the capsular contracture rate with Microthane®-covered implants compared to textured implants is 15% lower. It is even 30% lower compared to smooth implants<sup>2)</sup>.

The low capsular contracture rate is attributed to the ingrowth and microencapsulation of the fibroblasts in the polyurethane-foam matrix (fig. 2). Due to the active healing process, a linear capsular contracture (fig. 1) and the resulting disfigurement of the implant are drastically reduced. In contrast to smooth and textured implants around which a single large capsule is created, the Microthane®-covered implants – due to microencapsulation of the polyurethane foam – encourage the growth of numerous microcapsules around the foam, whereby contractile forces are neutralized.

The tissue fixation and the highly cross-linked silicone gel provide a natural feeling to the breast. Implant dislocation and rotation occur in such a low frequency that POLYTECH offers a 10-year warranty against these adverse events. The low capsular contracture rate also allows the prepectoral implantation and allows a pleasing aesthetic result for the augmentation and reconstruction of the breast.

Due to the positive effect of tissue ingrowth, the foam is not visible at first sight after explantation. The polyurethane foam can only be made visible again when the capsule has been enzymatically degraded (fig. 3 and 4)<sup>3)</sup>!

In 1995, the American health authority “Food and Drug Administration” announced that the estimated excess cancer risk due to micropolyurethane-foam covered implants is less than one in one million over a woman’s lifetime<sup>4)</sup>. This figure indicates that there exists no significant danger according to standard risk analysis<sup>5)</sup>. The general risk to suffer from breast cancer is, according to the WHO statistics, one in nine.

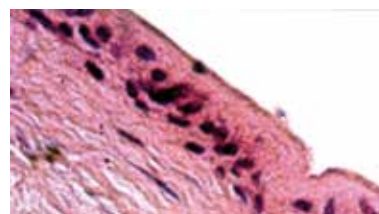
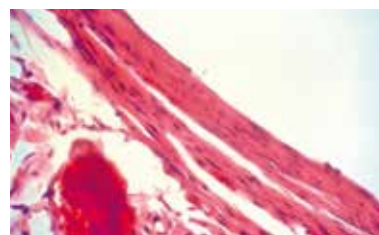
## Summary

Patients with Microthane® implants are better protected against capsular contracture for up to 10 years after implantation. Additionally, the average period until reoperation after Microthane® implant insertion is longer than with smooth or textured implants. Due to the Microthane® implants’ tissue ingrowth, implant dislocation and rotation very rarely occur.

All advantages of Microthane® implants combined drastically reduce the total complication rate for the patient.

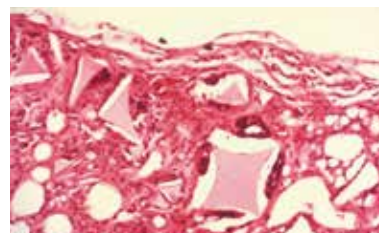
### Literature:

- 1) Handel, 1991; Pennisi, 1990; Shapiro, 1989; Hester et al., 2001; Baudelot, 1989; Gasperoni, 1992; Hermann, 1984; Eyssen, 1984; Schatten, 1984; Artz, 1988; Vázquez, 2007  
 2) Handel, 2006; 3) Szycher & Siciliano, 1991; 4) Food and Drug Administration, 1995; 5) Wilson, 1979



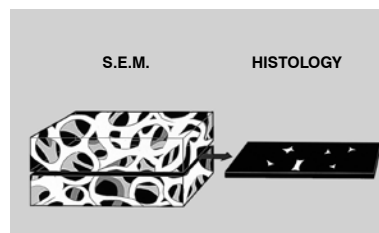
### 1 Passive healing:

Using smooth-walled silicone implants (fig. top), a capsule with low vascularization is formed around the foreign body. The contractile forces squeeze the implant and the originally soft consistence is lost; the breast becomes harder and is eventually deformed. This also happens with textured implants (fig. down), though the fibrotic pattern of the capsule is slightly fractured.

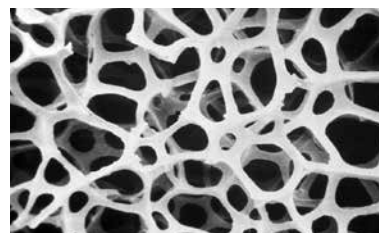


### 2 Active healing:

The structure of the Microthane® surface breaks the fibrotic pattern and actively encourages cellular involvement. It re-models the tissue into a sponge-like and richly vascular configuration around the implant.



3 On the left side, the three dimensional structure of Microthane® foam is shown as it could be seen through a scanning electron microscope (SEM). When sectioned for a histological study, the structure appears fragmentary even though it is complete.



4 Microthane® foam freed from tissue by enzymes 9 years after implantation.



# Microthane®

Même® – micropolyurethane-foam coated																	
		LP Low Projection			MP Moderate Projection			HP High Projection			XP Extra-High Projection						
Base (mm)	Order n°	Projection (mm)		Vol. (ml)	Order n°	Projection (mm)		Vol. (ml)	Order n°	Projection (mm)		Vol. (ml)					
 A C		 B D			 B D				 B D		 B D						
73	73	30724-055 <sup>1</sup> *	25	46	55	30725-070 <sup>1</sup> *	30	51	70	30726-090 <sup>1</sup> *	36	55	90	30727-105 <sup>1</sup> *	42	59	105
78	78	30724-065 <sup>1</sup>	26	49	65	30725-090 <sup>1</sup>	32	54	90	30726-110 <sup>1</sup>	38	58	110	30727-125	45	63	125
83	83	30724-085 <sup>1</sup> *	26	51	85	30725-105 <sup>1</sup> *	33	57	105	30726-125 <sup>1</sup> *	39	62	125	30727-155 <sup>1</sup> *	47	66	155
88	88	30724-095 <sup>1</sup>	27	54	95	30725-120	34	60	120	30726-155	41	65	155	30727-180	49	70	180
93	93	30724-110 <sup>1</sup> *	28	57	110	30725-145 <sup>1</sup> *	35	63	145	30726-180 <sup>1</sup> *	42	68	180	30727-215 <sup>1</sup> *	51	73	215
98	98	30724-125	29	60	125	30725-165	37	66	165	30726-210	44	71	210	30727-250	53	77	250
103	103	30724-150 <sup>1</sup> *	30	62	150	30725-195 <sup>1</sup> *	38	69	195	30726-235 <sup>1</sup> *	46	75	235	30727-285 <sup>1</sup> *	55	81	285
108	108	30724-165	31	65	165	30725-220	39	72	220	30726-275	47	78	275	30727-330	57	84	330
113	113	30724-185 <sup>1</sup> *	31	68	185	30725-255 <sup>1</sup> *	40	75	255	30726-315 <sup>1</sup> *	49	81	315	30727-380 <sup>1</sup> *	59	88	380
118	118	30724-215	32	71	215	30725-285	42	78	285	30726-360	51	84	360	30727-430	61	91	430
123	123	30724-235 <sup>1</sup> *	33	73	235	30725-320 <sup>1</sup> *	43	81	320	30726-400 <sup>1</sup> *	53	87	400	30727-485 <sup>1</sup> *	63	95	485
128	128	30724-270	34	76	270	30725-360	45	84	360	30726-450	55	91	450	30727-545	65	98	545
133	133	30724-295 <sup>1</sup> *	35	79	295	30725-400 <sup>1</sup> *	46	87	400	30726-505 <sup>1</sup> *	57	94	505	30727-610 <sup>1</sup> *	67	102	610
138	138	30724-330	36	82	330	30725-445	47	90	445	30726-560	59	97	560	30727-675	69	105	675
143	143	30724-365 <sup>1</sup> *	37	85	365	30725-495 <sup>1</sup> *	49	93	495	30726-620 <sup>1</sup> *	61	100	620	30727-755 <sup>1</sup> *	71	109	755
148	148	30724-400 <sup>1</sup>	37	87	400	30725-545 <sup>1</sup>	50	96	545	30726-690 <sup>1</sup>	63	104	690	30727-830 <sup>1</sup>	73	112	830
153	153	30724-440 <sup>1</sup> *	38	90	440	30725-600 <sup>1</sup> *	51	99	600	30726-760 <sup>1</sup> *	64	107	760	30727-920 <sup>1</sup> *	75	116	920
158	158	30724-485 <sup>1</sup>	39	93	485	30725-660 <sup>1</sup>	53	102	660	30726-835 <sup>1</sup>	66	110	835	30727-1010 <sup>1</sup>	77	118	1010

# POLYtxt®

Même® – textured (standard)																	
		LP Low Projection			MP Moderate Projection			HP High Projection			XP Extra-High Projection						
Base (mm)	Order n°	Projection (mm)		Vol. (ml)	Order n°	Projection (mm)		Vol. (ml)	Order n°	Projection (mm)		Vol. (ml)					
 A C		 B D			 B D				 B D		 B D						
70	70	20724-055 <sup>1</sup> *	23	43	55	20725-070 <sup>1</sup> *	28	47	70	20726-090 <sup>1</sup> *	34	51	90	20727-105 <sup>1</sup> *	40	55	105
75	75	20724-065 <sup>1</sup>	24	46	65	20725-090 <sup>1</sup>	30	50	90	20726-110 <sup>1</sup>	36	54	110	20727-125	43	59	125
80	80	20724-085 <sup>1</sup> *	24	49	85	20725-105 <sup>1</sup> *	31	53	105	20726-125 <sup>1</sup> *	37	58	125	20727-155 <sup>1</sup> *	45	62	155
85	85	20724-095 <sup>1</sup>	25	51	95	20725-120	32	56	120	20726-155	39	61	155	20727-180	47	66	180
90	90	20724-110 <sup>1</sup> *	26	54	110	20725-145 <sup>1</sup> *	33	59	145	20726-180 <sup>1</sup> *	40	64	180	20727-215 <sup>1</sup> *	49	69	215
95	95	20724-125	27	57	125	20725-165	35	62	165	20726-210	42	67	210	20727-250	51	73	250
100	100	20724-150 <sup>1</sup> *	28	60	150	20725-195 <sup>1</sup> *	36	65	195	20726-235 <sup>1</sup> *	44	71	235	20727-285 <sup>1</sup> *	53	77	285
105	105	20724-165	29	62	165	20725-220	37	68	220	20726-275	45	74	275	20727-330	55	80	330
110	110	20724-185 <sup>1</sup> *	29	65	185	20725-255 <sup>1</sup> *	38	71	255	20726-315 <sup>1</sup> *	47	77	315	20727-380 <sup>1</sup> *	57	84	380
115	115	20724-215	30	68	215	20725-285	40	74	285	20726-360	49	80	360	20727-430	59	87	430
120	120	20724-235 <sup>1</sup> *	31	71	235	20725-320 <sup>1</sup> *	41	77	320	20726-400 <sup>1</sup> *	51	83	400	20727-485 <sup>1</sup> *	61	91	485
125	125	20724-270	32	73	270	20725-360	43	80	360	20726-450	53	87	450	20727-545	63	94	545
130	130	20724-295 <sup>1</sup> *	33	76	295	20725-400 <sup>1</sup> *	44	83	400	20726-505 <sup>1</sup> *	55	90	505	20727-610 <sup>1</sup> *	65	98	610
135	135	20724-330	34	79	330	20725-445	45	86	445	20726-560	57	93	560	20727-675	67	101	675
140	140	20724-365 <sup>1</sup> *	35	82	365	20725-495 <sup>1</sup> *	47	89	495	20726-620 <sup>1</sup> *	59	96	620	20727-755 <sup>1</sup> *	69	105	755
145	145	20724-400 <sup>1</sup>	35	85	400	20725-545 <sup>1</sup>	48	92	545	20726-690 <sup>1</sup>	61	100	690	20727-830 <sup>1</sup>	71	108	830
150	150	20724-440 <sup>1</sup> *	36	87	440	20725-600 <sup>1</sup> *	49	95	600	20726-760 <sup>1</sup> *	62	103	760	20727-920 <sup>1</sup> *	73	112	920
155	155	20724-485 <sup>1</sup>	37	90	485	20725-660 <sup>1</sup>	51	98	660	20726-835 <sup>1</sup>	64	106	835	20727-1010 <sup>1</sup>	75	115	1010

Sizers – available in all sizes marked with an asterisk (\*)

\* silicone-gel filled, smooth sizers, non-sterile, resterilisable, CE

Order n° e.g. 20724-150M, 20725-195M, 20726-235M, 20727-285M

<sup>1</sup> Products marked with (1) will be manufactured on demand as will products with volumes of more than 750 ml.

# MESMO<sup>®</sup> sensitive

## Même<sup>®</sup> – microtextured

Base (mm)		MP Moderate Projection			HP High Projection			XP Extra-High Projection		
A	C	Order n°	Projection (mm)	Vol. (ml)	Order n°	Projection (mm)	Vol. (ml)	Order n°	Projection (mm)	Vol. (ml)
85	85	15725-120	32 56	120	15726-155	39 61	155			
90	90	15725-145*	33 59	145	15726-180*	40 64	180	15727-215*	49 69	215
95	95	15725-165	35 62	165	15726-210	42 67	210	15727-250	51 73	250
100	100	15725-195*	36 65	195	15726-235*	44 71	235	15727-285*	53 77	285
103	103				15726-255	45 72	255	15727-305	54 78	305
105	105	15725-220	37 68	220	15726-275	45 74	275	15727-330	55 80	330
108	108				15726-295	46 75	295	15727-355	56 82	355
110	110	15725-255*	38 71	255	15726-315*	47 77	315	15727-380*	57 84	380
113	113				15726-335	48 79	335			
115	115	15725-285	40 74	285	15726-360	49 80	360	15727-430	59 87	430
118	118	15725-300	40 75	300						
120	120	15725-320*	41 77	320	15726-400*	51 83	400	15727-485*	61 91	485
125	125	15725-360	43 80	360	15726-450	53 87	450			
130	130	15725-400*	44 83	400	15726-505*	55 90	505			
135	135	15725-445	45 86	445	15726-560	57 93	560			
140	140				15726-620*	59 96	620			

# POLYsmooth<sup>™</sup>

## Même<sup>®</sup> – smooth

Base (mm)		LP Low Projection			MP Moderate Projection			HP High Projection			XP Extra-High Projection		
A	C	Order n°	Projection (mm)	Vol. (ml)	Order n°	Projection (mm)	Vol. (ml)	Order n°	Projection (mm)	Vol. (ml)	Order n°	Projection (mm)	Vol. (ml)
70	70	10724-055*	23 43	55	10725-070*	28 47	70	10726-090*	34 51	90	10727-105*	40 55	105
75	75	10724-065 <sup>1</sup>	24 46	65	10725-090 <sup>1</sup>	30 50	90	10726-110 <sup>1</sup>	36 54	110	10727-125	43 59	125
80	80	10724-085 <sup>1</sup> *	24 49	85	10725-105 <sup>1</sup> *	31 53	105	10726-125 <sup>1</sup> *	37 58	125	10727-155*	45 62	155
85	85	10724-095 <sup>1</sup>	25 51	95	10725-120	32 56	120	10726-155	39 61	155	10727-180	47 66	180
90	90	10724-110*	26 54	110	10725-145*	33 59	145	10726-180*	40 64	180	10727-215*	49 69	215
95	95	10724-125	27 57	125	10725-165	35 62	165	10726-210	42 67	210	10727-250	51 73	250
100	100	10724-150*	28 60	150	10725-195*	36 65	195	10726-235*	44 71	235	10727-285*	53 77	285
105	105	10724-165	29 62	165	10725-220	37 68	220	10726-275	45 74	275	10727-330	55 80	330
110	110	10724-185*	29 65	185	10725-255*	38 71	255	10726-315*	47 77	315	10727-380*	57 84	380
115	115	10724-215	30 68	215	10725-285	40 74	285	10726-360	49 80	360	10727-430	59 87	430
120	120	10724-235*	31 71	235	10725-320*	41 77	320	10726-400*	51 83	400	10727-485*	61 91	485
125	125	10724-270	32 73	270	10725-360	43 80	360	10726-450	53 87	450	10727-545	63 94	545
130	130	10724-295*	33 76	295	10725-400*	44 83	400	10726-505*	55 90	505	10727-610*	65 98	610
135	135	10724-330	34 79	330	10725-445	45 86	445	10726-560	57 93	560	10727-675	67 101	675
140	140	10724-365*	35 82	365	10725-495 <sup>1</sup> *	47 89	495	10726-620*	59 96	620	10727-755 <sup>1</sup> *	69 105	755
145	145	10724-400 <sup>1</sup>	35 85	400	10725-545 <sup>1</sup>	48 92	545	10726-690 <sup>1</sup>	61 100	690	10727-830 <sup>1</sup>	71 108	830
150	150	10724-440 <sup>1</sup> *	36 87	440	10725-600 <sup>1</sup> *	49 95	600	10726-760 <sup>1</sup> *	62 103	760	10727-920 <sup>1</sup> *	73 112	920
155	155	10724-485 <sup>1</sup>	37 90	485	10725-660 <sup>1</sup>	51 98	660	10726-835 <sup>1</sup>	64 106	835	10727-1010 <sup>1</sup>	75 115	1010

Sizers – available in all sizes marked with an asterisk (\*)

\* silicone-gel filled, smooth sizers, non-sterile, resterilisable, CE

Order n° e.g. 20724-150M, 20725-195M, 20726-235M, 20727-285M

<sup>1</sup> Products marked with (1) will be manufactured on demand as will products with volumes of more than 750 ml.

approximate measurements



# Microthane®

Replicon® – micropolyurethane-foam coated																
		LP Low Projection			MP Moderate Projection			HP High Projection			XP Extra-High Projection					
Base (mm)	Order n°	Projection (mm)		Vol. (ml)	Order n°	Projection (mm)		Vol. (ml)	Order n°	Projection (mm)		Vol. (ml)				
<b>73</b> <b>73</b>	30734-050 <sup>1</sup> *	25	34	<b>50</b>	30735-065 <sup>1</sup> *	30	41	<b>65</b>	30736-075 <sup>1</sup> *	36	46	<b>75</b>	30737-095 <sup>1</sup> *	42	50	<b>95</b>
<b>78</b> <b>78</b>	30734-060 <sup>1</sup>	26	36	<b>60</b>	30735-075 <sup>1</sup>	32	43	<b>75</b>	30736-095 <sup>1</sup>	38	48	<b>95</b>	30737-110	45	53	<b>110</b>
<b>83</b> <b>83</b>	30734-070 <sup>1</sup> *	26	38	<b>70</b>	30735-095 <sup>1</sup> *	33	45	<b>95</b>	30736-115 <sup>1</sup> *	39	51	<b>115</b>	30737-130 <sup>1</sup> *	47	56	<b>130</b>
<b>88</b> <b>88</b>	30734-085 <sup>1</sup>	27	40	<b>85</b>	30735-110	34	48	<b>110</b>	30736-130	41	53	<b>130</b>	30737-160	49	59	<b>160</b>
<b>93</b> <b>93</b>	30734-100 <sup>1</sup> *	28	42	<b>100</b>	30735-125 <sup>1</sup> *	35	50	<b>125</b>	30736-160 <sup>1</sup> *	42	56	<b>160</b>	30737-185 <sup>1</sup> *	51	62	<b>185</b>
<b>98</b> <b>98</b>	30734-110	29	44	<b>110</b>	30735-150	37	52	<b>150</b>	30736-180	44	58	<b>180</b>	30737-220	53	65	<b>220</b>
<b>103</b> <b>103</b>	30734-125 <sup>1</sup> *	30	46	<b>125</b>	30735-170 <sup>1</sup> *	38	54	<b>170</b>	30736-210 <sup>1</sup> *	46	61	<b>210</b>	30737-255 <sup>1</sup> *	55	67	<b>255</b>
<b>108</b> <b>108</b>	30734-150	31	48	<b>150</b>	30735-195	39	56	<b>195</b>	30736-240	47	63	<b>240</b>	30737-290	57	70	<b>290</b>
<b>113</b> <b>113</b>	30734-165 <sup>1</sup> *	31	50	<b>165</b>	30735-220 <sup>1</sup> *	40	59	<b>220</b>	30736-275 <sup>1</sup> *	49	66	<b>275</b>	30737-330 <sup>1</sup> *	59	73	<b>330</b>
<b>118</b> <b>118</b>	30734-185	32	52	<b>185</b>	30735-255	42	61	<b>255</b>	30736-315	51	68	<b>315</b>	30737-380	61	76	<b>380</b>
<b>123</b> <b>123</b>	30734-210 <sup>1</sup> *	33	54	<b>210</b>	30735-280 <sup>1</sup> *	43	63	<b>280</b>	30736-350 <sup>1</sup> *	53	71	<b>350</b>	30737-425 <sup>1</sup> *	63	79	<b>425</b>
<b>128</b> <b>128</b>	30734-235	34	56	<b>235</b>	30735-320	45	65	<b>320</b>	30736-395	55	73	<b>395</b>	30737-480	65	82	<b>480</b>
<b>133</b> <b>133</b>	30734-265 <sup>1</sup> *	35	58	<b>265</b>	30735-350 <sup>1</sup> *	46	67	<b>350</b>	30736-445 <sup>1</sup> *	57	76	<b>445</b>	30737-535 <sup>1</sup> *	67	84	<b>535</b>
<b>138</b> <b>138</b>	30734-290	36	59	<b>290</b>	30735-390	47	70	<b>390</b>	30736-495	59	78	<b>495</b>	30737-600	69	87	<b>600</b>
<b>143</b> <b>143</b>	30734-320 <sup>1</sup> *	37	61	<b>320</b>	30735-435 <sup>1</sup> *	49	72	<b>435</b>	30736-550 <sup>1</sup> *	61	81	<b>550</b>	30737-665 <sup>1</sup> *	71	90	<b>665</b>
<b>148</b> <b>148</b>	30734-350	37	63	<b>350</b>	30735-480	50	74	<b>480</b>	30736-605 <sup>1</sup>	63	83	<b>605</b>	30737-730 <sup>1</sup>	73	93	<b>730</b>
<b>153</b> <b>153</b>	30734-390 <sup>1</sup> *	38	65	<b>390</b>	30735-530 <sup>1</sup> *	51	76	<b>530</b>	30736-670 <sup>1</sup> *	64	86	<b>670</b>	30737-810 <sup>1</sup> *	75	96	<b>810</b>
<b>158</b> <b>158</b>	30734-425	39	67	<b>425</b>	30735-580	53	78	<b>580</b>	30736-735 <sup>1</sup>	66	88	<b>735</b>	30737-890 <sup>1</sup>	77	99	<b>890</b>

# POLYtxt®

Replicon® – textured (standard)																
		LP Low Projection			MP Moderate Projection			HP High Projection			XP Extra-High Projection					
Base (mm)	Order n°	Projection (mm)		Vol. (ml)	Order n°	Projection (mm)		Vol. (ml)	Order n°	Projection (mm)		Vol. (ml)				
<b>70</b> <b>70</b>	20734-050 <sup>1</sup> *	23	33	<b>50</b>	20735-065 <sup>1</sup> *	28	37	<b>65</b>	20736-075 <sup>1</sup> *	34	42	<b>75</b>	20737-095 <sup>1</sup> *	40	46	<b>95</b>
<b>75</b> <b>75</b>	20734-060 <sup>1</sup>	24	34	<b>60</b>	20735-075 <sup>1</sup>	30	39	<b>75</b>	20736-095 <sup>1</sup>	36	44	<b>95</b>	20737-110	43	49	<b>110</b>
<b>80</b> <b>80</b>	20734-070 <sup>1</sup> *	24	36	<b>70</b>	20735-095 <sup>1</sup> *	31	41	<b>95</b>	20736-115 <sup>1</sup> *	37	47	<b>115</b>	20737-130 <sup>1</sup> *	45	52	<b>130</b>
<b>85</b> <b>85</b>	20734-085 <sup>1</sup>	25	38	<b>85</b>	20735-110	32	44	<b>110</b>	20736-130	39	49	<b>130</b>	20737-160	47	55	<b>160</b>
<b>90</b> <b>90</b>	20734-100 <sup>1</sup> *	26	40	<b>100</b>	20735-125 <sup>1</sup> *	33	46	<b>125</b>	20736-160 <sup>1</sup> *	40	52	<b>160</b>	20737-185 <sup>1</sup> *	49	58	<b>185</b>
<b>95</b> <b>95</b>	20734-110	27	42	<b>110</b>	20735-150	35	48	<b>150</b>	20736-180	42	54	<b>180</b>	20737-220	51	61	<b>220</b>
<b>100</b> <b>100</b>	20734-125 <sup>1</sup> *	28	44	<b>125</b>	20735-170 <sup>1</sup> *	36	50	<b>170</b>	20736-210 <sup>1</sup> *	44	57	<b>210</b>	20737-255 <sup>1</sup> *	53	63	<b>255</b>
<b>105</b> <b>105</b>	20734-150	29	46	<b>150</b>	20735-195	37	52	<b>195</b>	20736-240	45	59	<b>240</b>	20737-290	55	66	<b>290</b>
<b>110</b> <b>110</b>	20734-165 <sup>1</sup> *	29	48	<b>165</b>	20735-220 <sup>1</sup> *	38	55	<b>220</b>	20736-275 <sup>1</sup> *	47	62	<b>275</b>	20737-330 <sup>1</sup> *	57	69	<b>330</b>
<b>115</b> <b>115</b>	20734-185	30	50	<b>185</b>	20735-255	40	57	<b>255</b>	20736-315	49	64	<b>315</b>	20737-380	59	72	<b>380</b>
<b>120</b> <b>120</b>	20734-210 <sup>1</sup> *	31	52	<b>210</b>	20735-280 <sup>1</sup> *	41	59	<b>280</b>	20736-350 <sup>1</sup> *	51	67	<b>350</b>	20737-425 <sup>1</sup> *	61	75	<b>425</b>
<b>125</b> <b>125</b>	20734-235	32	54	<b>235</b>	20735-320	43	61	<b>320</b>	20736-395	53	69	<b>395</b>	20737-480	63	78	<b>480</b>
<b>130</b> <b>130</b>	20734-265 <sup>1</sup> *	33	56	<b>265</b>	20735-350 <sup>1</sup> *	44	63	<b>350</b>	20736-445 <sup>1</sup> *	55	72	<b>445</b>	20737-535 <sup>1</sup> *	65	80	<b>535</b>
<b>135</b> <b>135</b>	20734-290	34	58	<b>290</b>	20735-390	45	66	<b>390</b>	20736-495	57	74	<b>495</b>	20737-600	67	83	<b>600</b>
<b>140</b> <b>140</b>	20734-320 <sup>1</sup> *	35	59	<b>320</b>	20735-435 <sup>1</sup> *	47	68	<b>435</b>	20736-550 <sup>1</sup> *	59	77	<b>550</b>	20737-665 <sup>1</sup> *	69	86	<b>665</b>
<b>145</b> <b>145</b>	20734-350	35	61	<b>350</b>	20735-480	48	70	<b>480</b>	20736-605 <sup>1</sup>	61	79	<b>605</b>	20737-730 <sup>1</sup>	71	89	<b>730</b>
<b>150</b> <b>150</b>	20734-390 <sup>1</sup> *	36	63	<b>390</b>	20735-530 <sup>1</sup> *	49	72	<b>530</b>	20736-670 <sup>1</sup> *	62	82	<b>670</b>	20737-810 <sup>1</sup> *	73	92	<b>810</b>
<b>155</b> <b>155</b>	20734-425	37	65	<b>425</b>	20735-580	51	74	<b>580</b>	20736-735 <sup>1</sup>	64	84	<b>735</b>	20737-890 <sup>1</sup>	75	95	<b>890</b>

Sizers – available in all sizes marked with an asterisk (\*)







\* silicone-gel filled, smooth sizers, non-sterile, resterilisable, CE

Order n° e.g. 20734-125M, 20735-170M, 20736-210M, 20737-255M

<sup>1</sup> Products marked with (1) will be manufactured on demand as will products with volumes of more than 750 ml.



# MESMO<sup>®</sup> sensitive

Replicon <sup>®</sup> – softtexturiert									
MP Moderate Projection				HP High Projection					
Base (mm)	Order n°	Projection (mm)		Vol. (ml)	Order n°	Projection (mm)	Vol. (ml)		
 A	 C	 B	 D			 B	 D		
100	100				15736-210*	44	57	<b>210</b>	
105	105				15736-240	45	59	<b>240</b>	
110	110	15735-220*	38	55	<b>220</b>	15736-275*	47	62	<b>275</b>
115	115	15735-255	40	57	<b>255</b>	15736-315	49	64	<b>315</b>
120	120	15735-280*	41	59	<b>280</b>	15736-350*	51	67	<b>350</b>
125	125	15735-320	43	61	<b>320</b>	15736-395	53	69	<b>395</b>
130	130	15735-350*	44	63	<b>350</b>	15736-445*	55	72	<b>445</b>
135	135	15735-390	45	66	<b>390</b>	15736-495	57	74	<b>495</b>
140	140	15735-435*	47	68	<b>435</b>	15736-550*	59	77	<b>550</b>

## We listen to you

The research & development team at POLYTECH Health & Aesthetics has a long-standing tradition of cooperation with physicians. Since 1991/92, we have manufactured breast implants under our own direction. We perfected the polyurethane-coated implants, and we were able to do this because of our permanent exchange of ideas with physicians.

Our active cooperation with physicians permitted us to compile a wide portfolio of new products. To date, the cooperation based on partnership and the continuous dialog with physicians rank high for us and are pivotal for the successful adoption of our products.

This is why we listen to you. It is you who are working with our products in the operation theatre and you are in direct contact with the patients, hear how satisfied they are. Your experience and feedback are important to us. Optimizing our products is to your benefit, as your patients' satisfaction level grows.

Please do not hesitate to contact us if you have ideas for product optimization or new products:  
[productmanagement@polytechhealth.com](mailto:productmanagement@polytechhealth.com)

**Sizers** – available in all sizes marked with an asterisk (\*)

\* silicone-gel filled, smooth sizers, non-sterile, resterilisable, C€

**Order n° e.g. 20736-220M, 20737-275M**

<sup>1</sup> Products marked with (1) will be manufactured on demand as will products with volumes of more than 750 ml.



# Microthane®

Opticon® – micropolyurethane-foam coated																	
		LP Low Projection			MP Moderate Projection			HP High Projection			XP Extra-High Projection						
Base (mm)	Order n°	Projection (mm)		Vol. (ml)	Order n°	Projection (mm)		Vol. (ml)	Order n°	Projection (mm)		Vol. (ml)					
A	C	B	D		B	D			B	D	B	D					
73	62	30744-045 <sup>1*</sup>	25	32	45	30745-055 <sup>1*</sup>	30	39	55	30746-065 <sup>1*</sup>	36	44	65	30747-075 <sup>1*</sup>	42	48	75
78	66	30744-050 <sup>1</sup>	26	34	50	30745-065 <sup>1</sup>	32	41	65	30746-075 <sup>1</sup>	38	46	75	30747-095 <sup>1</sup>	45	51	95
83	70	30744-060 <sup>1*</sup>	26	35	60	30745-075 <sup>1*</sup>	33	43	75	30746-095 <sup>1*</sup>	39	48	95	30747-115 <sup>1*</sup>	47	54	115
88	74	30744-070 <sup>1</sup>	27	37	70	30745-095 <sup>1</sup>	34	45	95	30746-115	41	51	115	30747-130	49	56	130
93	79	30744-085 <sup>1*</sup>	28	39	85	30745-105 <sup>1*</sup>	35	47	105	30746-130 <sup>*</sup>	42	53	130	30747-160 <sup>*</sup>	51	59	160
98	83	30744-095 <sup>1</sup>	29	41	95	30745-125	37	49	125	30746-155	44	55	155	30747-185	53	62	185
103	87	30744-110 <sup>*</sup>	30	42	110	30745-145 <sup>*</sup>	38	51	145	30746-175 <sup>*</sup>	46	58	175	30747-215 <sup>*</sup>	55	65	215
108	91	30744-120	31	44	120	30745-165	39	53	165	30746-205	47	60	205	30747-240	57	67	240
113	95	30744-140 <sup>*</sup>	31	46	140	30745-185 <sup>*</sup>	40	55	185	30746-230 <sup>*</sup>	49	62	230	30747-280 <sup>*</sup>	59	70	280
118	100	30744-160	32	48	160	30745-210	42	57	210	30746-265	51	65	265	30747-320	61	73	320
123	104	30744-175 <sup>*</sup>	33	49	175	30745-235 <sup>*</sup>	43	59	235	30746-295 <sup>*</sup>	53	67	295	30747-360 <sup>*</sup>	63	75	360
128	108	30744-200	34	51	200	30745-265	45	61	265	30746-335	55	69	335	30747-400	65	78	400
133	112	30744-220 <sup>*</sup>	35	53	220	30745-295 <sup>*</sup>	46	63	295	30746-375 <sup>*</sup>	57	72	375	30747-450 <sup>*</sup>	67	81	450
138	116	30744-240	36	55	240	30745-330	47	65	330	30746-420	59	74	420	30747-500	69	83	500
143	121	30744-270 <sup>*</sup>	37	56	270	30745-365 <sup>*</sup>	49	67	365	30746-460 <sup>*</sup>	61	76	460	30747-560 <sup>*</sup>	71	86	560
148	125	30744-295	37	58	295	30745-400	50	69	400	30746-510	63	79	510	30747-615	73	89	615
153	129	30744-325 <sup>*</sup>	38	60	325	30745-445 <sup>*</sup>	51	71	445	30746-560 <sup>*</sup>	64	81	560	30747-680 <sup>1*</sup>	75	91	680
158	133	30744-360	39	62	360	30745-490	53	73	490	30746-615	66	84	615	30747-750 <sup>1</sup>	77	94	750

# POLYtxt®

Opticon® – textured (standard)																	
		LP Low Projection			MP Moderate Projection			HP High Projection			XP Extra-High Projection						
Base (mm)	Order n°	Projection (mm)		Vol. (ml)	Order n°	Projection (mm)		Vol. (ml)	Order n°	Projection (mm)		Vol. (ml)					
A	C	B	D		B	D			B	D	B	D					
70	59	20744-045 <sup>1*</sup>	23	30	45	20745-055 <sup>1*</sup>	28	35	55	20746-065 <sup>1*</sup>	34	40	65	20747-075 <sup>1*</sup>	40	44	75
75	63	20744-050 <sup>1</sup>	24	32	50	20745-065 <sup>1</sup>	30	37	65	20746-075 <sup>1</sup>	36	42	75	20747-095 <sup>1</sup>	43	47	95
80	67	20744-060 <sup>1*</sup>	24	34	60	20745-075 <sup>1*</sup>	31	39	75	20746-095 <sup>1*</sup>	37	44	95	20747-115 <sup>1*</sup>	45	50	115
85	71	20744-070 <sup>1</sup>	25	35	70	20745-095 <sup>1</sup>	32	41	95	20746-115	39	47	115	20747-130	47	52	130
90	76	20744-085 <sup>1*</sup>	26	37	85	20745-105 <sup>1*</sup>	33	43	105	20746-130 <sup>*</sup>	40	49	130	20747-160 <sup>*</sup>	49	55	160
95	80	20744-095 <sup>1</sup>	27	39	95	20745-125	35	45	125	20746-155	42	51	155	20747-185	51	58	185
100	84	20744-110 <sup>*</sup>	28	41	110	20745-145 <sup>*</sup>	36	47	145	20746-175 <sup>*</sup>	44	54	175	20747-215 <sup>*</sup>	53	61	215
105	88	20744-120	29	42	120	20745-165	37	49	165	20746-205	45	56	205	20747-240	55	63	240
110	92	20744-140 <sup>*</sup>	29	44	140	20745-185 <sup>*</sup>	38	51	185	20746-230 <sup>*</sup>	47	58	230	20747-280 <sup>*</sup>	57	66	280
115	97	20744-160	30	46	160	20745-210	40	53	210	20746-265	49	61	265	20747-320	59	69	320
120	101	20744-175 <sup>*</sup>	31	48	175	20745-235 <sup>*</sup>	41	55	235	20746-295 <sup>*</sup>	51	63	295	20747-360 <sup>*</sup>	61	71	360
125	105	20744-200	32	49	200	20745-265	43	57	265	20746-335	53	65	335	20747-400	63	74	400
130	109	20744-220 <sup>*</sup>	33	51	220	20745-295 <sup>*</sup>	44	59	295	20746-375 <sup>*</sup>	55	68	375	20747-450 <sup>*</sup>	65	77	450
135	113	20744-240	34	53	240	20745-330	45	61	330	20746-420	57	70	420	20747-500	67	79	500
140	118	20744-270 <sup>*</sup>	35	55	270	20745-365 <sup>*</sup>	47	63	365	20746-460 <sup>*</sup>	59	72	460	20747-560 <sup>*</sup>	69	82	560
145	122	20744-295	35	56	295	20745-400	48	65	400	20746-510	61	75	510	20747-615	71	85	615
150	126	20744-325 <sup>*</sup>	36	58	325	20745-445 <sup>*</sup>	49	67	445	20746-560 <sup>*</sup>	62	77	560	20747-680 <sup>1*</sup>	73	87	680
155	130	20744-360	37	60	360	20745-490	51	69	490	20746-615	64	80	615	20747-750 <sup>1</sup>	75	90	750

Sizers – available in all sizes marked with an asterisk (\*)

\* silicone-gel filled, smooth sizers, non-sterile, resterilisable, CE









Order n° e.g. 20744-140M, 20745-185M, 20746-230M, 20747-280M

<sup>1</sup> Products marked with (1) will be manufactured on demand as will products with volumes of more than 750 ml.









approximate measurements



# Microthane®

Optimam® – micropolyurethane-foam coated																	
		LP Low Projection			MP Moderate Projection			HP High Projection			XP Extra-High Projection						
Base (mm)	Order n°	Projection (mm)		Vol. (ml)	Order n°	Projection (mm)		Vol. (ml)	Order n°	Projection (mm)		Vol. (ml)					
 <b>A</b>	 <b>C</b>	 <b>B</b>	 <b>D</b>		 <b>B</b>	 <b>D</b>			 <b>B</b>	 <b>D</b>							
<b>73</b>	<b>84</b>	30774-060*	25	37	<b>60</b>	30775-075*	30	43	<b>75</b>	30776-095*	36	48	<b>95</b>	30777-110*	42	52	<b>110</b>
<b>78</b>	<b>90</b>	30774-070 <sup>1</sup>	26	38	<b>70</b>	30775-090 <sup>1</sup>	32	45	<b>90</b>	30776-110 <sup>1</sup>	38	50	<b>110</b>	30777-130	45	55	<b>130</b>
<b>83</b>	<b>96</b>	30774-085*	26	41	<b>85</b>	30775-105*	33	48	<b>105</b>	30776-130*	39	53	<b>130</b>	30777-160*	47	58	<b>160</b>
<b>88</b>	<b>102</b>	30774-100 <sup>1</sup>	27	43	<b>100</b>	30775-125	34	50	<b>125</b>	30776-155	41	56	<b>155</b>	30777-185	49	61	<b>185</b>
<b>93</b>	<b>107</b>	30774-110*	28	45	<b>110</b>	30775-150*	35	52	<b>150</b>	30776-180*	42	58	<b>180</b>	30777-220*	51	64	<b>220</b>
<b>98</b>	<b>113</b>	30774-130	29	47	<b>130</b>	30775-170	37	55	<b>170</b>	30776-215	44	61	<b>215</b>	30777-255	53	67	<b>255</b>
<b>103</b>	<b>119</b>	30774-150*	30	49	<b>150</b>	30775-200*	38	57	<b>200</b>	30776-250*	46	64	<b>250</b>	30777-290*	55	70	<b>290</b>
<b>108</b>	<b>125</b>	30774-170	31	51	<b>170</b>	30775-225	39	60	<b>225</b>	30776-280	47	66	<b>280</b>	30777-335	57	73	<b>335</b>
<b>113</b>	<b>131</b>	30774-195*	31	54	<b>195</b>	30775-260*	40	62	<b>260</b>	30776-320*	49	69	<b>320</b>	30777-385*	59	76	<b>385</b>
<b>118</b>	<b>136</b>	30774-220	32	56	<b>220</b>	30775-290	42	64	<b>290</b>	30776-365	51	72	<b>365</b>	30777-440	61	79	<b>440</b>
<b>123</b>	<b>142</b>	30774-240*	33	58	<b>240</b>	30775-330*	43	67	<b>330</b>	30776-415*	53	74	<b>415</b>	30777-495*	63	82	<b>495</b>
<b>128</b>	<b>148</b>	30774-275	34	60	<b>275</b>	30775-370	45	69	<b>370</b>	30776-460	55	77	<b>460</b>	30777-555	65	85	<b>555</b>
<b>133</b>	<b>154</b>	30774-305*	35	62	<b>305</b>	30775-405*	46	71	<b>405</b>	30776-515*	57	80	<b>515</b>	30777-620*	67	88	<b>620</b>
<b>138</b>	<b>160</b>	30774-335	36	64	<b>335</b>	30775-455	47	74	<b>455</b>	30776-570	59	82	<b>570</b>	30777-695	69	91	<b>695</b>
<b>143</b>	<b>165</b>	30774-375*	37	66	<b>375</b>	30775-505*	49	76	<b>505</b>	30776-640*	61	85	<b>640</b>	30777-770 <sup>1</sup> *	71	94	<b>770</b>
<b>148</b>	<b>171</b>	30774-415	37	68	<b>415</b>	30775-555	50	78	<b>555</b>	30776-705 <sup>1</sup>	63	88	<b>705</b>	30777-855 <sup>1</sup>	73	97	<b>855</b>
<b>153</b>	<b>177</b>	30774-450*	38	70	<b>450</b>	30775-610*	51	81	<b>610</b>	30776-775*	64	90	<b>775</b>	30777-940 <sup>1</sup> *	75	100	<b>940</b>
<b>158</b>	<b>183</b>	30774-495	39	72	<b>495</b>	30775-670	53	83	<b>670</b>	30776-855 <sup>1</sup>	66	93	<b>855</b>	30777-1035 <sup>1</sup>	77	103	<b>1035</b>

# POLYtxt®

Optimam® – textured (standard)																	
		LP Low Projection			MP Moderate Projection			HP High Projection			XP Extra-High Projection						
Base (mm)	Order n°	Projection (mm)		Vol. (ml)	Order n°	Projection (mm)		Vol. (ml)	Order n°	Projection (mm)		Vol. (ml)					
 <b>A</b>	 <b>C</b>	 <b>B</b>	 <b>D</b>		 <b>B</b>	 <b>D</b>			 <b>B</b>	 <b>D</b>							
<b>73</b>	<b>84</b>	20774-060 <sup>1</sup> *	23	35	<b>60</b>	20775-075*	28	39	<b>75</b>	20776-095*	34	44	<b>95</b>	20777-110*	40	48	<b>110</b>
<b>78</b>	<b>90</b>	20774-070 <sup>1</sup>	24	37	<b>70</b>	20775-090 <sup>1</sup>	30	41	<b>90</b>	20776-110 <sup>1</sup>	36	46	<b>110</b>	20777-130	43	51	<b>130</b>
<b>83</b>	<b>96</b>	20774-085*	24	39	<b>85</b>	20775-105*	31	44	<b>105</b>	20776-130*	37	49	<b>130</b>	20777-160*	45	54	<b>160</b>
<b>88</b>	<b>102</b>	20774-100 <sup>1</sup>	25	41	<b>100</b>	20775-125	32	46	<b>125</b>	20776-155	39	52	<b>155</b>	20777-185	47	57	<b>185</b>
<b>93</b>	<b>107</b>	20774-110*	26	43	<b>110</b>	20775-150*	33	48	<b>150</b>	20776-180*	40	54	<b>180</b>	20777-220*	49	60	<b>220</b>
<b>98</b>	<b>113</b>	20774-130	27	45	<b>130</b>	20775-170	35	51	<b>170</b>	20776-215	42	57	<b>215</b>	20777-255	51	63	<b>255</b>
<b>103</b>	<b>119</b>	20774-150*	28	47	<b>150</b>	20775-200*	36	53	<b>200</b>	20776-250*	44	60	<b>250</b>	20777-290*	53	66	<b>290</b>
<b>108</b>	<b>125</b>	20774-170	29	49	<b>170</b>	20775-225	37	56	<b>225</b>	20776-280	45	62	<b>280</b>	20777-335	55	69	<b>335</b>
<b>113</b>	<b>131</b>	20774-195*	29	51	<b>195</b>	20775-260*	38	58	<b>260</b>	20776-320*	47	65	<b>320</b>	20777-385*	57	72	<b>385</b>
<b>118</b>	<b>136</b>	20774-220	30	54	<b>220</b>	20775-290	40	60	<b>290</b>	20776-365	49	68	<b>365</b>	20777-440	59	75	<b>440</b>
<b>123</b>	<b>142</b>	20774-240*	31	56	<b>240</b>	20775-330*	41	63	<b>330</b>	20776-415*	51	70	<b>415</b>	20777-495*	61	78	<b>495</b>
<b>128</b>	<b>148</b>	20774-275	32	58	<b>275</b>	20775-370	43	65	<b>370</b>	20776-460	53	73	<b>460</b>	20777-555	63	81	<b>555</b>
<b>133</b>	<b>154</b>	20774-305*	33	60	<b>305</b>	20775-405*	44	67	<b>405</b>	20776-515*	55	76	<b>515</b>	20777-620*	65	84	<b>620</b>
<b>138</b>	<b>160</b>	20774-335	34	62	<b>335</b>	20775-455	45	70	<b>455</b>	20776-570	57	78	<b>570</b>	20777-695	67	87	<b>695</b>
<b>143</b>	<b>165</b>	20774-375*	35	64	<b>375</b>	20775-505*	47	72	<b>505</b>	20776-640*	59	81	<b>640</b>	20777-770 <sup>1</sup> *	69	90	<b>770</b>
<b>148</b>	<b>171</b>	20774-415	35	66	<b>415</b>	20775-555	48	74	<b>555</b>	20776-705 <sup>1</sup>	61	84	<b>705</b>	20777-855 <sup>1</sup>	71	93	<b>855</b>
<b>153</b>	<b>177</b>	20774-450*	36	68	<b>450</b>	20775-610*	49	77	<b>610</b>	20776-775*	62	86	<b>775</b>	20777-940 <sup>1</sup> *	73	96	<b>940</b>
<b>158</b>	<b>183</b>	20774-495	37	70	<b>495</b>	20775-670	51	79	<b>670</b>	20776-855 <sup>1</sup>	64	89	<b>855</b>	20777-1035 <sup>1</sup>	75	99	<b>1035</b>

Sizers – available in all sizes marked with an asterisk (\*)

\* silicone-gel filled, smooth sizers, non-sterile, resterilisable, CE

Order n° e.g. 20774-195M, 20775-260M, 20776-320M, 20777-385M

<sup>1</sup> Products marked with (1) will be manufactured on demand as will products with volumes of more than 750 ml.

approximate measurements

## **POLYTECH Health & Aesthetics GmbH**

Alzheimer Str. 32 | 64807 Dieburg | Germany  
Fon +49 (0)6071 9863-0 | Fax +49 (0)6071 9863-30

eMail [info@polytechhealth.com](mailto:info@polytechhealth.com)  
[www.polytech-health-aesthetics.com](http://www.polytech-health-aesthetics.com)

Facebook [www.facebook.com/polytechhealth.en](http://www.facebook.com/polytechhealth.en)  
Twitter [@polytechhealth](https://twitter.com/polytechhealth)



Implants made by POLYTECH  
– QUALITY made in Germany  
[www.polytech-health-aesthetics.com](http://www.polytech-health-aesthetics.com)